

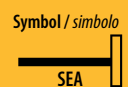
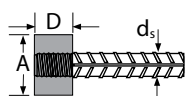
01.01.2018

## Rebar coupler HBS Raccordo filettato HBS

### HBS-SEA

End anchoring HBS-SEA suitable for the standard HBS thread  
*Ancoraggio terminale HBS-SEA, adatto per la filettatura standard HBS*

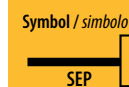
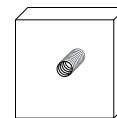
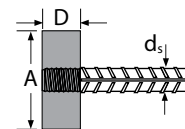
Bar reference Denominazione della barra $\varnothing d_s$	Dimensions Dimensioni			
	Screw thread Filettatura		D [mm]	A [mm]
HBS-SEA-12	ISO	M 12 x 1,75	18	30
HBS-SEA-14	ISO	M 14 x 2	21	35
HBS-SEA-16	ISO	M 16 x 2	24	40
HBS-SEA-18	ISO	M 18 x 2,5	27	45
HBS-SEA-20	ISO	M 20 x 2,5	30	50
HBS-SEA-22	ISO	M 22 x 2,5	33	55
HBS-SEA-26	ISO	M 27 x 3	39	65
HBS-SEA-30	ISO	M 30 x 3,5	45	75
HBS-SEA-34	Spéc./Spez.	M 34 x 3	51	85
HBS-SEA-40	Spéc./Spez.	M 40 x 4	60	100



### HBS-SEP

End anchoring HBS-SEP suitable for the standard HBS thread  
*Ancoraggio terminale HBS-SEP, adatto per la filettatura standard HBS*

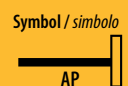
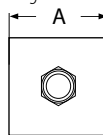
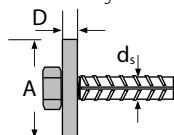
Bar reference Denominazione della barra $\varnothing d_s$	Dimensions Dimensioni			
		$\varnothing$ [mm]	Dimension Massen [mm]	Epaisseur Dicke [mm]
HBS-SEP-12	ISO	12	60 x 60	15
HBS-SEP-14	ISO	14	70 x 70	15
HBS-SEP-16	ISO	16	80 x 80	20
HBS-SEP-18	ISO	18	100 x 100	25
HBS-SEP-20	ISO	20	100 x 100	25
HBS-SEP-22	ISO	22	110 x 110	25
HBS-SEP-26	ISO	26	130 x 130	30
HBS-SEP-30	ISO	30	150 x 150	40
HBS-SEP-34	Spéc./Spez.	34	200 x 200	40
HBS-SEP-40	Spéc./Spez.	40	200 x 200	50



The anchoring length can be reduced up to 10 x diameter  
*È possibile ridurre la lunghezza d'ancoraggio a 10 x il diametro*

### HBS-AP

End anchoring HBS-AP suitable for the standard HBS thread  
with or without anchoring plate  
*Ancoraggio terminale HBS-AP adatto per la filettatura standard HBS con o senza targhetta di ancoraggio*



Bar reference Denominazione della barra $\varnothing d_s$	Dimensions Dimensioni			
	Screw thread Filettatura		A [mm]	D [mm]
HBS-AP-12	ISO	M 12 x 1,75	40	10
HBS-AP-14	ISO	M 14 x 2	40	10
HBS-AP-16	ISO	M 16 x 2	50	10
HBS-AP-18	ISO	M 18 x 2,5	55	12
HBS-AP-20	ISO	M 20 x 2,5	65	15
HBS-AP-22	ISO	M 22 x 2,5	65	15

The load that can be taken up by the end anchorings can be calculated based on the length of the anchoring, the edge and centre distances and the strength of the concrete according to SIA 179 and/or SIA 262.

*I carichi sostenibili dall'ancoraggio terminale dipendono dalla lunghezza dell'ancoraggio, le distanze del bordo e dell'asse, così come la rigidità del calcestruzzo devono essere determinate secondo SIA 179 o SIA 262.*