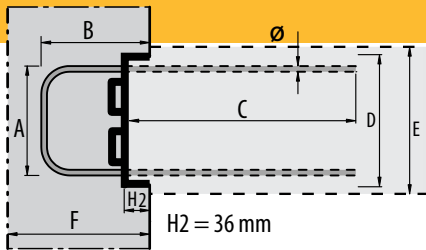


01.11.2018

Rebar connections AT-cisa Standard program Armature di ripresa AT-cisa Programma standard	Model Model	Steel Acciaio  Ø MM	Spacing Divisione  CM <b>T</b>	Length in CM Lunghezza in CM						Weight ML Peso ML	
				A	B	C	D	E	F	Sheet and Reinforcement Lamiera e armatura	Reinforcement Armatura
	S120-10-15	10	15	10	12	*	12.2	15-16	15	7.11	5.50
	120-10-15	10	15	10	15	*	12.2	15-16	20	7.36	5.75
	150-10-15	10	15	13	15	*	15	17-20	20	7.72	5.86
	150-10-15X	10	15	13	15	*	15	17-20	15	8.55	6.68
	150-10-15Y	10	15	13	20	*	15	17-20	25	8.13	6.27
	150-10-15Z	10	15	13	25	*	15	17-20	30	8.55	6.68
	150-12-15X	12	15	13	15	*	15	17-20	20	11.48	9.62
	150-12-15Y	12	15	13	20	*	15	17-20	25	12.07	10.21
	150-12-15Z	12	15	13	25	*	15	17-20	30	12.67	10.80

Reinforcement stirrup  
Staffa

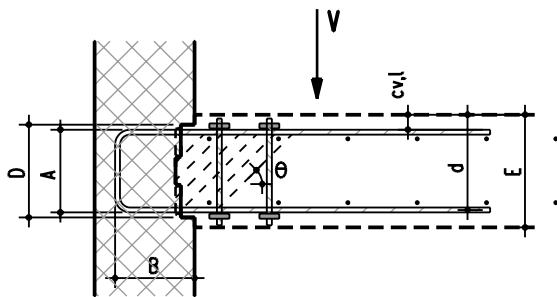


1<sup>st</sup> stage  
1ª fase

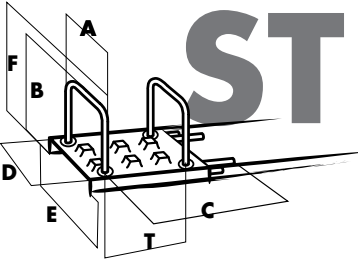
2<sup>nd</sup> stage  
2ª fase

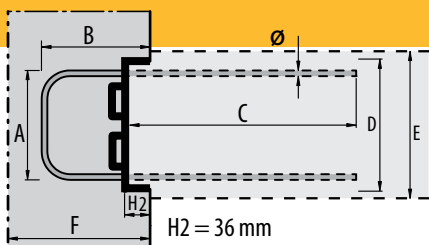
Specially toothed finish for very high demands, which can take up both transverse force perpendicular to the concreting joint and shear force lengthwise to the concreting joint.

*Finitura dentata speciale, estremamente robusta, in grado di sostenere il carico trasversale perpendicolare al giunto di ripresa del getto, e il carico di spinta longitudinale al giunto di ripresa del getto.*



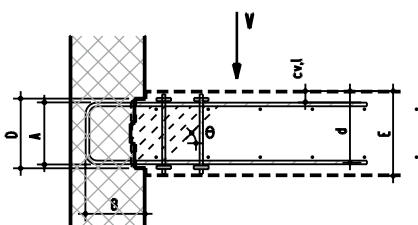
	Length of the pieces (ML) / Lunghezza dei pezzi (ML)				
	0.60	0.90	1.20	1.80	2.40
*) Dimension C / Dimensione C Ø10*CM:	36	50	50	50	50
Ø 10 Type X / TipoX ** CM:			60	60	60
Ø 12 CM:	36	50	60	60	60
Ø 14 CM: Type/Tipo 190 CM:	36	50	66	66	66
Ø 14 CM: Type/Tipo 240 CM:	36	50	66	66	66
Ø 14 CM: Type/Tipo 120/280/380/480 CM:	36	50	66	66	66

Rebar connections AT-cisa Standard program Armature di ripresa AT-cisa Programma standard	Model Model	Steel Acciaio Ø MM	Spacing Divisione CM T	Length in CM Lunghezza in CM						Weight ML Peso ML	
				A	B	C	D	E	F	Sheet and Reinforcement Lamiera e armatura	Reinforcement Armatura
						*					
 <p><b>Reinforcement stirrup</b> <b>Staffa</b></p>	190-10-15	10	15	17	15	*	18.6	21-25	20	8.18	6.01
	190-10-15X	10	15	17	15	*	18.6	21-25	20	9.00	6.83
	190-10-15Y	10	15	17	20	*	18.6	21-25	25	8.59	6.42
	190-10-15Z	10	15	17	25	*	18.6	21-25	30	9.00	6.83
	190-12-15X	12	15	17	15	*	18.6	21-25	20	12.00	9.83
	190-12-15Y	12	15	17	20	*	18.6	21-25	25	12.59	10.43
	190-12-15Z	12	15	17	25	*	18.6	21-25	30	13.18	11.02
	190-14-15X	14	15	17	15	*	18.6	21-25	20	16.53	14.37
	190-14-15Z	14	15	17	25	*	18.6	21-25	30	18.15	15.98
	190-14-15Z3	14	15	17	30	*	18.6	21-25	40	18.95	16.79
	240-10-15	10	15	22	15	*	24	≥26	20	8.86	6.23
	240-10-15X	10	15	22	15	*	24	≥26	20	9.69	7.05
	240-10-15Y	10	15	22	20	*	24	≥26	25	9.28	6.64
	240-10-15Z	10	15	22	25	*	24	≥26	30	9.69	7.05
	240-12-15X	12	15	22	15	*	24	≥26	20	12.79	10.15
	240-12-15Y	12	15	22	20	*	24	≥26	25	13.38	10.74
	240-12-15Z	12	15	22	25	*	24	≥26	30	13.97	11.34
	240-14-15X	14	15	22	15	*	24	≥26	20	17.44	14.80
	240-14-15Z	14	15	22	25	*	24	≥26	30	19.05	16.42
	240-14-15Z3	14	15	22	30	*	24	≥26	40	19.86	17.22
	240-14-15Z4	14	15	22	40	*	24	≥26	50	21.47	18.84



1<sup>st</sup> stage  
1<sup>a</sup> fase

2<sup>nd</sup> stage  
2<sup>a</sup> fase



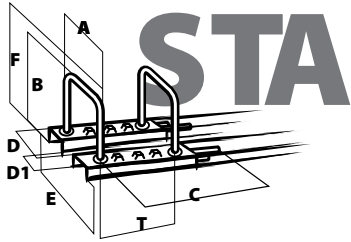
Specially toothed finish for very high demands, which can take up both transverse force perpendicular to the concreting joint and shear force lengthwise to the concreting joint.

*Finitura dentata speciale, estremamente robusta, in grado di sostenere il carico trasversale perpendicolare al giunto di ripresa del getto, e il carico di spinta longitudinale al giunto di ripresa del getto.*

	Length of the pieces (ML) / Lunghezza dei pezzi (ML)				
	0.60	0.90	1.20	1.80	2.40
*) Dimension C / Dimensione C Ø10*CM:	36	50	50	50	50
Ø 10 Type X / TipoX ** CM:			60	60	60
Ø 12 CM:	36	50	60	60	60
Ø 14 CM: Type/Tipo 190 CM:	36	50	66	66	66
Ø 14 CM: Type/Tipo 240 CM:	36	50	66	66	66
Ø 14 CM: Type/Tipo 120/280/380/480 CM:	36	50	66	66	66

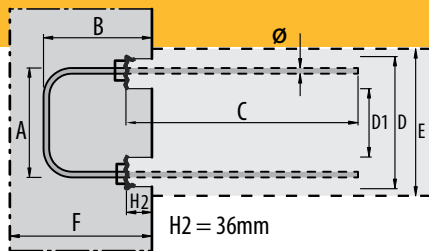
01.11.2018

Rebar connections AT-cisa Standard program Armature di ripresa AT-cisa Programma standard	Model Model	Steel Acciaio	Spacing Divisione	Length in CM Lunghezza in CM						Weight ML Peso ML	
		Ø MM	CM T	A	B	C	D	E	F	Sheet and Reinforcement Lamiera e armatura	Reinforcement Armatura



Spacing for CISA only 15 cm / Divisione del CISA unicamente 15 cm

280-14-15X	14	15	24	15	*	28	≥29	20	18.23	15.00
280-14-15Z	14	15	24	25	*	28	≥29	30	19.85	16.62
280-14-15Z3	14	15	24	30	*	28	≥29	40	20.65	17.42
280-14-15Z4	14	15	24	40	*	28	≥29	50	22.27	19.04
380-14-15X	14	15	34	15	*	38	≥39	20	19.04	15.81
380-14-15Z	14	15	34	25	*	38	≥39	30	20.65	17.42
380-14-15Z3	14	15	34	30	*	38	≥39	40	21.46	18.23
380-14-15Z4	14	15	34	40	*	38	≥39	50	23.07	19.84
480-14-15X	14	15	44	15	*	48	≥49	20	19.85	16.62
480-14-15Z	14	15	44	25	*	48	≥49	30	21.46	18.23
480-14-15Z3	14	15	44	30	*	48	≥49	40	22.27	19.04
480-14-15Z4	14	15	44	40	*	48	≥49	50	28.72	25.49



1<sup>st</sup> stage  
1<sup>a</sup> fase

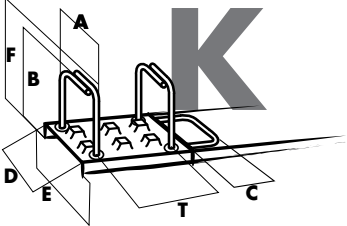
2<sup>nd</sup> stage  
2<sup>a</sup> fase

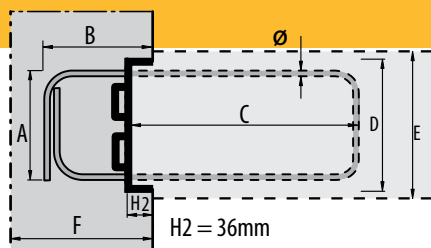
Specially toothed finish for very high demands, which can take up both transverse force perpendicular to the concreting joint and shear force lengthwise to the concreting joint.

Finitura dentata speciale, estremamente robusta, in grado di sostenere il carico trasversale perpendicolare al giunto di ripresa del getto, e il carico di spinta longitudinale al giunto di ripresa del getto.

	Length of the pieces (ML) / Lunghezza dei pezzi (ML)				
	0.60	0.90	1.20	1.80	2.40
*) Dimension C / Dimensione C Ø10*CM:	36	50	50	50	50
Ø 10 Type X / TipoX ** CM:			60	60	60
Ø 12 CM:	36	50	60	60	60
Ø 14 CM: Type/Tipo 190 CM:	36	50	66	66	66
Ø 14 CM: Type/Tipo 240 CM:	36	50	66	66	66
Ø 14 CM: Type/Tipo 120/280/380/480 CM:	36	50	66	66	66

01.11.2018

Rebar connections AT-cisa Standard program Armature di ripresa AT-cisa Programma standard	Model Model	Steel Acciaio Ø MM	Spacing Divisione CM T	Length in CM Lunghezza in CM						Weight ML Peso ML	
				A	B	C	D	E	F	Sheet and Reinforcement Lamiera e armatura	Reinforcement Armatura
 <p><b>Corbel Console</b></p>	K150 10/15	10	15	13	15	14	15	17-20	20	5.79	3.93
	K150 12/15X	12	15	13	15	14	15	17-20	20	7.52	5.65
	K150 12/15Y	12	15	13	20	14	15	17-20	25	8.11	6.25
	K150 12/15Z	12	15	13	25	18	15	17-20	30	9.17	7.31
	K190 12/15X	12	15	17	15	14	19	21-25	20	8.46	6.29
	K190 12/15Y	12	15	17	20	14	19	21-25	25	9.05	6.88
	K190 12/15Z	12	15	17	25	18	19	21-25	30	10.12	7.95



**1<sup>st</sup> stage  
1ª fase**

**2<sup>nd</sup> stage  
2ª fase**

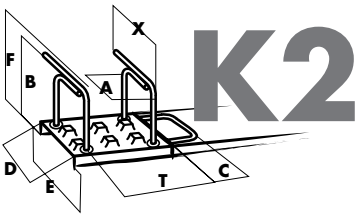
Specially toothed finish for very high demands, which can take up both transverse force perpendicular to the concreting joint and shear force lengthwise to the concreting joint.

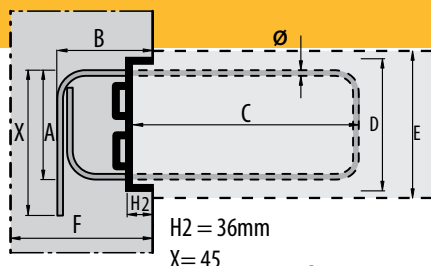
*Finitura dentata speciale, estremamente robusta, in grado di sostenere il carico trasversale perpendicolare al giunto di ripresa del getto, e il carico di spinta longitudinale al giunto di ripresa del getto.*

Standard boxes are delivered in lengths of 0.60 / 0.90 / 1.20 / 1.80 / 2.40 m.

*Le piastre standard hanno una lunghezza di 0.60 / 0.90 / 1.20 / 1.80 / 2.40 mt.*

01.11.2018

Rebar connections AT-cisa Standard program Armature di ripresa AT-cisa Programma standard	Model Model	Steel Acciaio	Spacing Divisione	Length in CM Lunghezza in CM						Weight ML Peso ML	
		Ø MM	CM T	A	B	C	D	E	F	Sheet and Reinforcement Lamiera e armatura	Reinforcement Armatura
 <p><b>Corbel Consolle</b> X=45</p>	K2 150 12/15X	12	15	13	15	18	15	17-20	20	10.65	8.79
	K2 150 12/15Y	12	15	13	20	18	15	17-20	25	11.25	9.38
	K2 150 12/15Z	12	15	13	25	18	15	17-20	30	11.84	9.98
	K2 190 10/15Y	10	15	17	20	14	19	21-25	25	8.80	6.63
	K2 190 10/15Z	10	15	17	25	14	19	21-25	30	9.21	7.05
	K2 190 12/15X	12	15	17	15	14	19	21-25	20	11.12	8.96
	K2 190 12/15Y	12	15	17	20	18	19	21-25	25	12.19	10.02
	K2 190 12/15Z	12	15	17	25	22	19	21-25	30	13.25	11.09
	K2 240 12/15Y	12	15	22	20	22	24	≥26	25	14.00	11.37
	K2 240 12/15Z	12	15	22	25	22	24	≥26	30	14.59	11.96



**1<sup>st</sup> stage**  
**1ª fase**

**2<sup>nd</sup> stage**  
**2ª fase**

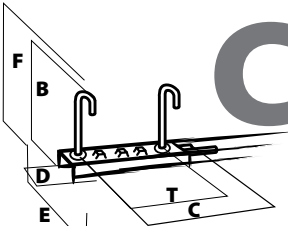
Specially toothed finish for very high demands, which can take up both transverse force perpendicular to the concreting joint and shear force lengthwise to the concreting joint.

*Finitura dentata speciale, estremamente robusta, in grado di sostenere il carico trasversale perpendicolare al giunto di ripresa del getto, e il carico di spinta longitudinale al giunto di ripresa del getto.*

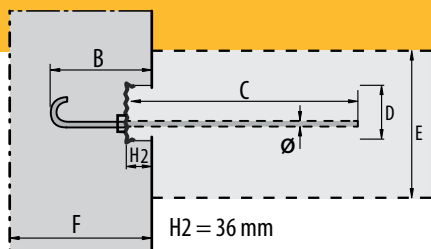
Standard boxes are delivered in lengths of 0.60 / 0.90 / 1.20 / 1.80 / 2.40 m.

*Le piastre standard hanno una lunghezza di 0.60 / 0.90 / 1.20 / 1.80 / 2.40 mt.*

01.11.2018

Rebar connections AT-cisa Standard program Armature di ripresa AT-cisa Programma standard	Model Model	Steel Acciaio Ø MM	Spacing Divisione CM T	Length in CM Lunghezza in CM						Weight ML Peso ML	
				A	B	C	D	E	F	Sheet and Reinforcement Lamiera e armatura	Reinforcement Armatura
	C120-10-15	10	15		15	*	12.2	VAR	20	4.70	3.09
	C120-10-15X	10	15		15	**	12.2	VAR	15	5.11	3.50
	C120-10-15Y	10	15		20	*	12.2	VAR	25	4.90	3.29
	C120-10-15Z	10	15		25	*	12.2	VAR	30	5.11	3.50
	C120-12-15X	12	15		15	*	12.2	VAR	15	6.76	5.15
	C120-12-15Y	12	15		20	*	12.2	VAR	25	7.06	5.45
	C120-12-15Z	12	15		25	*	12.2	VAR	30	7.36	5.74
	C120-14-15X	14	15		15	*	12.2	VAR	15	8.79	7.18
	C120-14-15Y	14	15		20	*	12.2	VAR	25	9.20	7.58
	C120-14-15Z	14	15		25	*	12.2	VAR	30	9.60	7.99
	C120-14-15Z3	14	15		30	*	12.2	VAR	40	10.00	8.39
	C120-14-15Z4	14	15		40	*	12.2	VAR	50	10.81	9.20

**Single bar  
Monobarra**

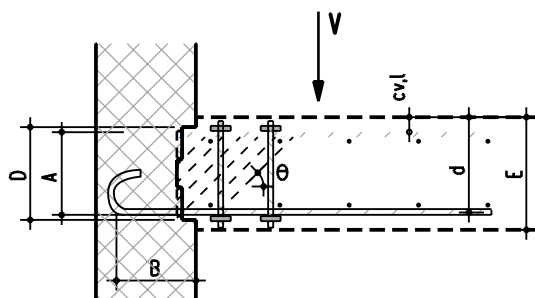


**1<sup>st</sup> stage  
1<sup>a</sup> fase**

**2<sup>nd</sup> stage  
2<sup>a</sup> fase**

Specially toothed finish for very high demands, which can take up both transverse force perpendicular to the concreting joint and shear force lengthwise to the concreting joint.

*Finitura dentata speciale, estremamente robusta, in grado di sostenere il carico trasversale perpendicolare al giunto di ripresa del getto, e il carico di spinta longitudinale al giunto di ripresa del getto.*



	Length of the pieces (ML) / Lunghezza dei pezzi (ML)				
	0.60	0.90	1.20	1.80	2.40
*) Dimension C / Dimensione C Ø10*CM:	36	50	50	50	50
Ø 10 Type X / TipoX ** CM:			60	60	60
Ø 12 CM:	36	50	60	60	60
Ø 14 CM: Type/Tipo 190 CM:	36	50	66	66	66
Ø 14 CM: Type/Tipo 240 CM:	36	50	66	66	66
Ø 14 CM: Type/Tipo 120/280/380/480 CM:	36	50	66	66	66