

01.11.2018

Rebar connections AT-cisa
Standard program
Armature di ripresa AT-cisa
Programma standard

Model
Model

Steel
Acciaio
Ø MM

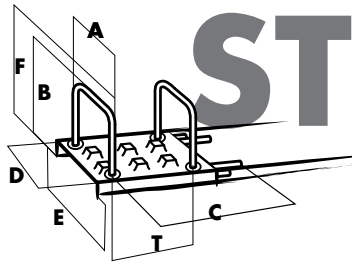
Spacing
Divisione
CM
T

Length in CM
Lunghezza in CM

Weight ML
Peso ML

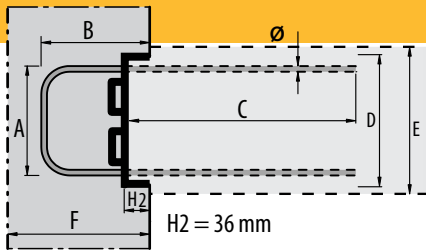
Sheet and
Reinforcement
Lamiera e
armatura

Reinforcement
Armatura



Reinforcement stirrup
Staffa

Model	Steel Ø MM	Spacing CM T	A	B	C	D	E	F	Sheet and Reinforcement	Reinforcement
S120-10-15	10	15	10	12	*	12.2	15-16	15	7.11	5.50
120-10-15	10	15	10	15	*	12.2	15-16	20	7.36	5.75
150-10-15	10	15	13	15	*	15	17-20	20	7.72	5.86
150-10-15X	10	15	13	15	*	15	17-20	15	8.55	6.68
150-10-15Y	10	15	13	20	*	15	17-20	25	8.13	6.27
150-10-15Z	10	15	13	25	*	15	17-20	30	8.55	6.68
150-12-15X	12	15	13	15	*	15	17-20	20	11.48	9.62
150-12-15Y	12	15	13	20	*	15	17-20	25	12.07	10.21
150-12-15Z	12	15	13	25	*	15	17-20	30	12.67	10.80

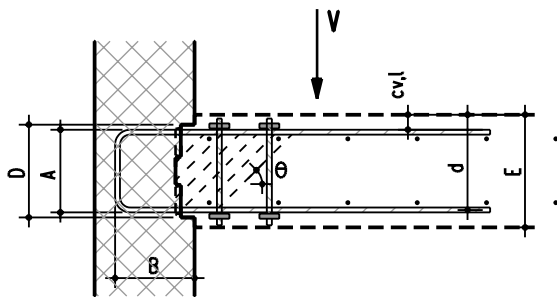


1st stage
1^a fase

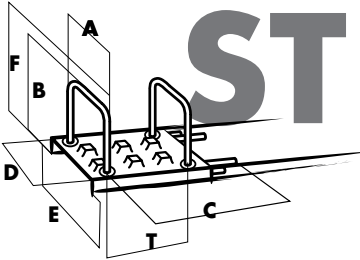
2nd stage
2^a fase

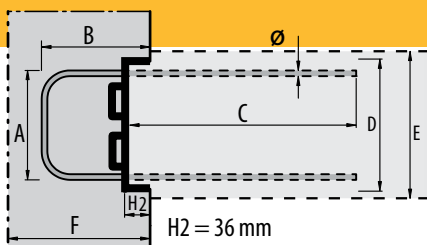
Specially toothed finish for very high demands, which can take up both transverse force perpendicular to the concreting joint and shear force lengthwise to the concreting joint.

Finitura dentata speciale, estremamente robusta, in grado di sostenere il carico trasversale perpendicolare al giunto di ripresa del getto, e il carico di spinta longitudinale al giunto di ripresa del getto.



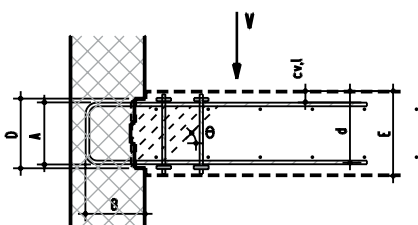
	Length of the pieces (ML) / Lunghezza dei pezzi (ML)				
	0.60	0.90	1.20	1.80	2.40
*) Dimension C / Dimensione C Ø10*CM:	36	50	50	50	50
Ø 10 Type X / TipoX ** CM:			60	60	60
Ø 12 CM:	36	50	60	60	60
Ø 14 CM: Type/Tipo 190 CM:	36	50	66	66	66
Ø 14 CM: Type/Tipo 240 CM:	36	50	66	66	66
Ø 14 CM: Type/Tipo 120/280/380/480 CM:	36	50	66	66	66

Rebar connections AT-cisa Standard program Armature di ripresa AT-cisa Programma standard	Model Model	Steel Acciaio Ø MM	Spacing Divisione CM T	Length in CM Lunghezza in CM						Weight ML Peso ML	
				A	B	C	D	E	F	Sheet and Reinforcement Lamiera e armatura	Reinforcement Armatura
						*					
 <p>Reinforcement stirrup Staffa</p>	190-10-15	10	15	17	15	*	18.6	21-25	20	8.18	6.01
	190-10-15X	10	15	17	15	*	18.6	21-25	20	9.00	6.83
	190-10-15Y	10	15	17	20	*	18.6	21-25	25	8.59	6.42
	190-10-15Z	10	15	17	25	*	18.6	21-25	30	9.00	6.83
	190-12-15X	12	15	17	15	*	18.6	21-25	20	12.00	9.83
	190-12-15Y	12	15	17	20	*	18.6	21-25	25	12.59	10.43
	190-12-15Z	12	15	17	25	*	18.6	21-25	30	13.18	11.02
	190-14-15X	14	15	17	15	*	18.6	21-25	20	16.53	14.37
	190-14-15Z	14	15	17	25	*	18.6	21-25	30	18.15	15.98
	190-14-15Z3	14	15	17	30	*	18.6	21-25	40	18.95	16.79
	240-10-15	10	15	22	15	*	24	≥26	20	8.86	6.23
	240-10-15X	10	15	22	15	*	24	≥26	20	9.69	7.05
	240-10-15Y	10	15	22	20	*	24	≥26	25	9.28	6.64
	240-10-15Z	10	15	22	25	*	24	≥26	30	9.69	7.05
	240-12-15X	12	15	22	15	*	24	≥26	20	12.79	10.15
	240-12-15Y	12	15	22	20	*	24	≥26	25	13.38	10.74
	240-12-15Z	12	15	22	25	*	24	≥26	30	13.97	11.34
	240-14-15X	14	15	22	15	*	24	≥26	20	17.44	14.80
	240-14-15Z	14	15	22	25	*	24	≥26	30	19.05	16.42
	240-14-15Z3	14	15	22	30	*	24	≥26	40	19.86	17.22
	240-14-15Z4	14	15	22	40	*	24	≥26	50	21.47	18.84



1st stage
1^a fase

2nd stage
2^a fase



Specially toothed finish for very high demands, which can take up both transverse force perpendicular to the concreting joint and shear force lengthwise to the concreting joint.

Finitura dentata speciale, estremamente robusta, in grado di sostenere il carico trasversale perpendicolare al giunto di ripresa del getto, e il carico di spinta longitudinale al giunto di ripresa del getto.

	Length of the pieces (ML) / Lunghezza dei pezzi (ML)				
	0.60	0.90	1.20	1.80	2.40
*) Dimension C / Dimensione C Ø10*CM:	36	50	50	50	50
Ø 10 Type X / TipoX ** CM:			60	60	60
Ø 12 CM:	36	50	60	60	60
Ø 14 CM: Type/Tipo 190 CM:	36	50	66	66	66
Ø 14 CM: Type/Tipo 240 CM:	36	50	66	66	66
Ø 14 CM: Type/Tipo 120/280/380/480 CM:	36	50	66	66	66